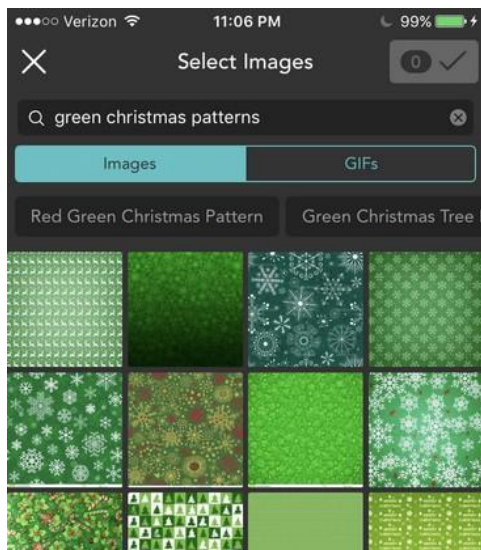


TRIANGLE PATCHWORK DIGITAL CHRISTMAS TREE WITH PIC COLLAGE

1 In Pic Collage, use the web image search tool to get your “patchwork” images. I searched “green Christmas patterns” for this example. I chose 16 squares for the project.



2 Pic Collage will insert all the images as squares. You will need to trim each square one at a time by double tapping then choosing Clip.

3 In the clip menu, choose the triangle. I do not resize the triangle since you ideally want the pieces to be the same size. For certain patterns, I might drag the triangle to a part of the pattern I really want to include.



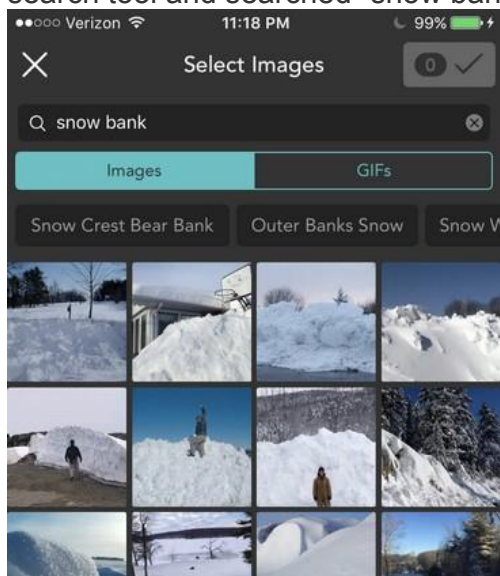
4 Once you’ve clipped all the pattern pieces into triangles you need to arrange the pieces. Touch the pieces and use a finger to flip every other piece upside down.



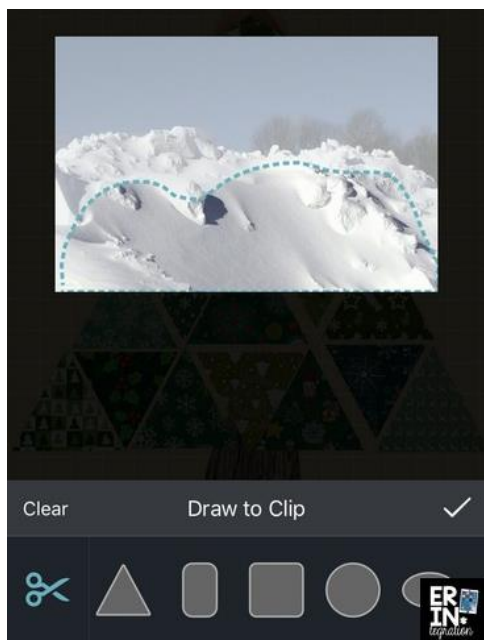
5 Use the web search tool to search for “star png” (png files have transparent backgrounds) and insert it onto the tree. I did the same series of steps to add a stump.



6 Add a background, either from within Pic Collage or from a web search, I also added a snowy bottom. To do that, I used the web search tool and searched “snow bank.



7 I inserted the snow bank image then double tapped it and chose “clip.” I used the free style clip to trace just a bottom chunk. I tried not to include any other elements since I wanted it to look like my tree was sitting in snow.



8 Then I dragged and stretched the snow across the bottom.



9 Finally use the text tool to add your first name and the name of your school. Add a Christmas message too, if you like.